

*It is our pleasure to invite
you to join the*
Flow Blue International
Collectors' Club, Inc.



The FBICC was established in 1986 with the purpose of promoting and increasing the collecting, interest, knowledge and enjoyment of flow blue and mulberry china through exchange of information among members worldwide.



Place
Stamp
Here

FBICC
PO BOX 5427
NAPERVILLE, IL 60567-5427

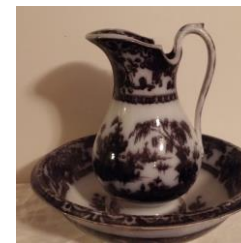
FLOW BLUE INTERNATIONAL COLLECTORS' CLUB
P.O. BOX 5427
NAPERVILLE, IL 60567-5427



Flow Blue International
Collectors' Club, Inc.



*Membership
Invitation*



WEBSITE: www.flowblue.org

Benefits of Membership:

- ❖ **Access to “Members Only” section of website www.flowblue.org**
 - **Pattern Identification Database:**
 - ✓ Color photos of plates, borders & marks etc.
 - ✓ Comments on pattern & manufacturer.
 - ✓ Source of references & educational articles.
 - **Convention Information**
 - **Message Board – general questions & info**
 - **Auction Results**
 - **Blue Berry Notes – all in color & archived**
 - **Links to other helpful websites**
- ❖ **Annual Membership Roster**
of members & dealers
- ❖ **Eligible to attend Regional Meetings**
- ❖ **Eligible to attend Annual Convention**
which is held in various locations & includes: Seminars, Rare & Unusual pieces, Displays, Flea Market, “Tops & Bottoms, Bluetique”, Table Sales & Auction- where Flow Blue & Mulberry pieces are bought & sold by members.
- ❖ **Blue Berry Notes Publication**
 - **Educational articles on patterns, pieces, reproductions & restorations**
 - **History of patterns, potters & unusual pieces**
 - **Blue Berry Market: list to buy/sell**
 - **Club Bulletin Board & Member Profiles**
 - **Convention & Regional Meeting Information**
 - **4 issues per year**
 - **20+ pages of pictures of beautiful pieces**

Membership/Dealer Application

Name (s): _____

Address: _____

City: _____ State/Province: _____

Postal Code: _____ Country: _____

Tel: _____ Fax: _____

Email: _____

Favorite Patterns (3 max.): _____

(Dealer Info): Business Name: _____

Business Address: _____

City: _____ State/Province: _____

Postal Code: _____ Country: _____

Tel: _____ Fax: _____

Email: _____

Shop Hours: _____ Shows – Specializing in: _____

Dues year is January 1 through December 31. Members not listed in membership roster if dues received after January 15. A membership can include two people from the same household.

Member Dues:	\$ 50.00
Outside US (add):	\$ 10.00
Listing in Dealer Section of Roster & Website (add):	\$ 10.00
TOTAL DUE:	\$

Make Check payable to: FBICC. US Dollars Only. You can also pay by PayPal on the website.